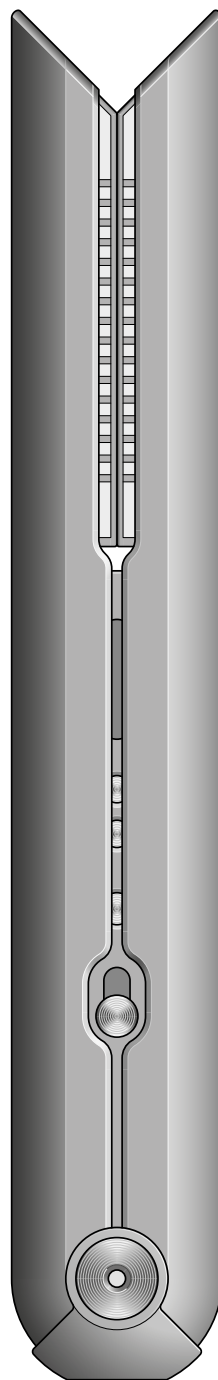


User manual



The Dyson corrale™ straightener in the closed position.

Contents

Activating your guarantee

In the box

Controls

Getting started

Using your straightener

Travelling with your straightener

Assembling the charging dock

Charging your straightener

Changing settings

Looking after your straightener

Alert screens

Thank you for choosing to buy a Dyson Corrale™ straightener

To achieve enhanced styling with less reliance on heat, Dyson engineers developed flexing plates. Made from materials selected for their flexibility, strength and thermal conduction, they shape to gather and control hair.

Explore www.dyson.co.id/haircare/dyson-corrале/corrале-owners.aspx
to:

Discover styling tips and guides.
Learn about your machine's features.
Activate your 2-year guarantee.

Activating your guarantee

We don't stop caring about our machines once they're yours.

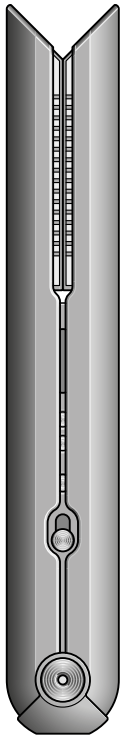
Even when your guarantee has ended, we'll still be on hand to help.

Exclusive owner benefits

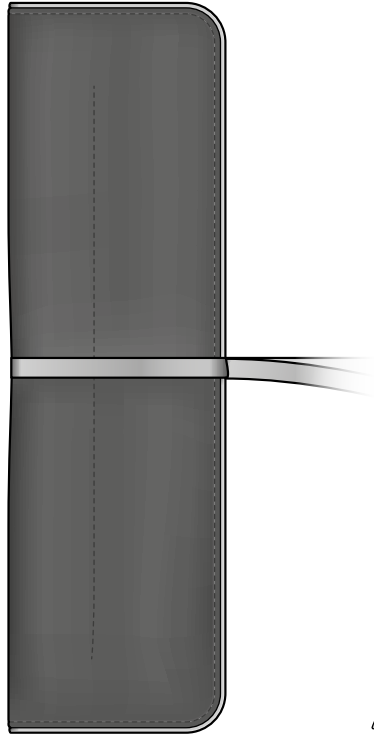
Free Dyson parts and labour.
Hassle-free replacement.
Expert advice. 7 days a week.
Styling tips and guides.

To activate your guarantee, you'll need your serial number, which can be found on the battery pack label.
Go to: www.dyson.co.id/support/registeryourmachine.aspx

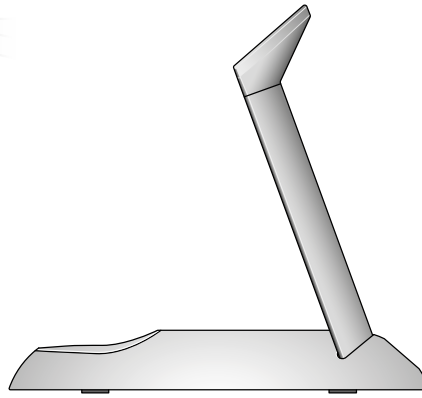
In the box



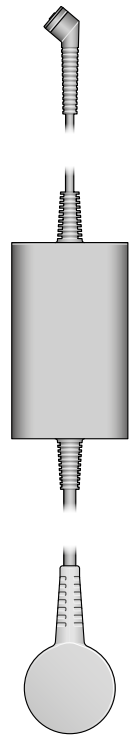
Dyson Corrale™ straightener



Heat-resistant travel pouch



Charging dock



Magnetic 360° charging cable

Controls

The straightener in the open position with pointers showing the location of the controls.

Flexing plates
Shape to gather and control your hair.

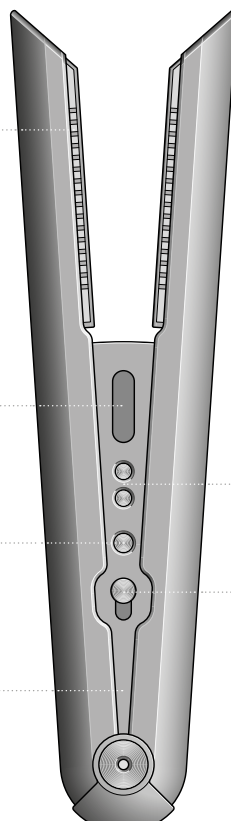
OLED screen
OLED screen shows information about temperature settings and battery level.

Power button

Charging LED

Temperature controls
Three heat settings, 165°C, 185°C and 210°C, to ensure effective straightening and styling for all hair types and length.

Lock button
Conceals the flexing plates for immediate storage after use.



Getting started

Getting started

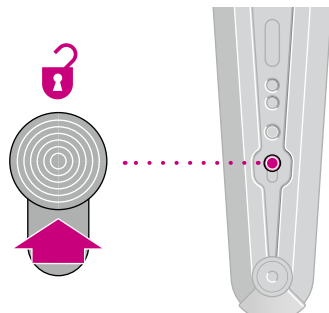
Your Dyson Corrale™ straightener is shipped in Flight-ready mode.

Fully charge your straightener before first use.

Before using your straightener for the first time, remove, rotate and replace the Flight-ready tag into the Home position, to connect the battery.

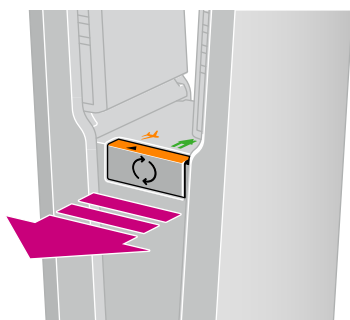
For the best styling results, make sure your hair is dry and tangle-free.

The unlock button with an arrow, pointing in an upwards direction towards the flexing plates, into the unlocked position.



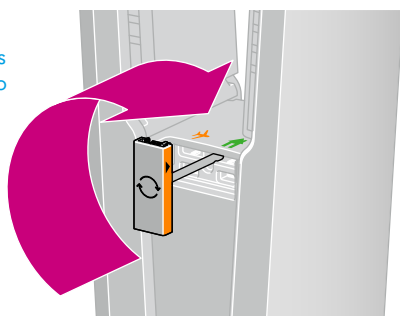
Unlock

The Flight ready tag with the aeroplane symbol aligned to the arrow on the tag. An arrow demonstrates that the Flight ready tag will need to be removed.



Remove

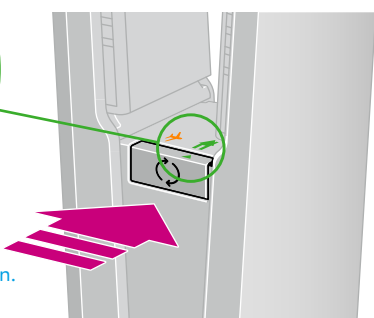
A rotating arrow that demonstrates that the flight ready tag will need to be rotated 180° once removed.



Rotate



The Flight ready tag being re-inserted with the arrow aligned to the house icon. The straightener is now ready to use.



Replace

Using your straightener

The straightener in the open position with the lock button in the upward position. The other control buttons, on the battery, can now be accessed.



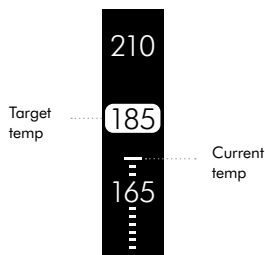
Turning on
Slide the Lock button to open your straightener.

The Power button will pulse red as your straightener heats up.

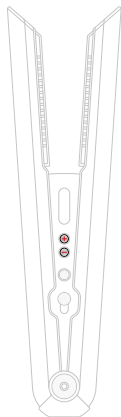
Press and hold the Power button until a battery icon appears on the OLED screen.

Your straightener is ready to use when the Power button illuminates red, a prompt sounds and a tick icon appears on the OLED screen.

Press the Temperature (+) button to select the temperature you want.



The temperature screen has a scale up to 210 with the target temperature highlighted and the current temperature shown on the scale.



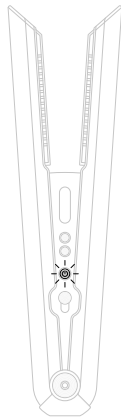
Adjusting the temperature
Press the Temperature (+/-) control buttons to select the temperature that suits your hair type and styling preference.

The temperature will appear on the OLED screen as it heats up or cools down and the Power button will pulse until the selected temperature has been reached.

Your straightener has three settings, to enable you to style at lower temperatures.

Go to: www.dyson.co.id/haircare/dyson-corrале/corrале-owners.aspx for styling tips and guides.

The straightener in the open position, showing the power button flashing.



Sleep mode
If your Dyson Corrale™ straightener is left unattended with the power on for longer than five minutes, the flexing plates will automatically switch off.

The temperature will increase to the last setting used.

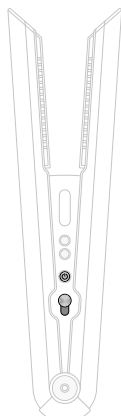
The Power button will flash red and an alert will sound every 10 seconds.

If your straightener is left unattended with the power on for a further five minutes, it will turn off completely.

Press any button to reactivate your straightener.

Go to: www.dyson.co.id/haircare/dyson-corrале/corrале-owners.aspx for styling tips and guides.

The straightener in the open position, with the Power button and Lock button highlighted.

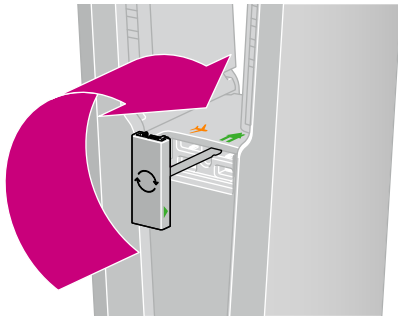


Turning off
Press and hold the Power button until the OLED screen turns off.

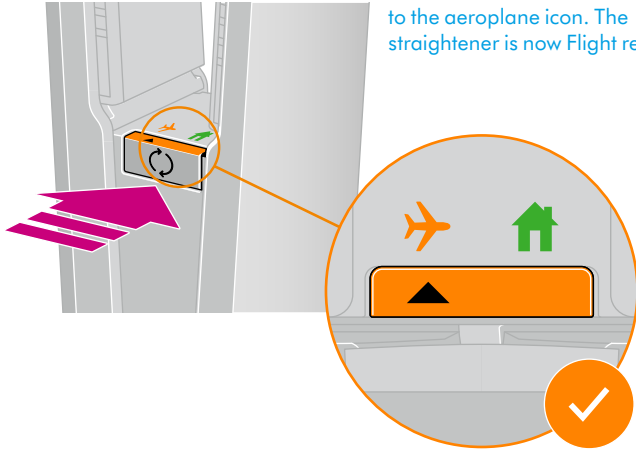
Close your straightener and slide the lock button to close.

The Power button will pulse until the flexing plates have cooled. If you close your straightener without turning the power off, it will turn off automatically.

Travelling with your straightener



A rotating arrow that demonstrates that the flight ready tag will need to be rotated 180° once removed.



The Flight ready tag being re-inserted with the arrow aligned to the aeroplane icon. The straightener is now Flight ready.

Getting ready to fly

The Dyson Corrale™ straightener is designed to meet ICAO regulations, allowing you to carry it on board an aircraft.

Before you fly:

Contact your airline in advance to inform them about the Flight-ready feature.

Remove, rotate and replace the Flight-ready tag in the Flight-ready position to disconnect the battery.

Store your straightener in your hand luggage.

Please note: Japanese Civil Aviation Bureau (JCAB) regulations state that you won't be able to take your straightener on flights to or from any Japanese airports.

For more information about being Flight-ready go to www.dyson.co.id/haircare/dyson-corrале/corrале-owners.aspx.

When the Flight-ready tag is set to the aeroplane symbol, all controls will be disabled. If you try to use your straightener when in the Flight-ready position, an aeroplane icon will appear on the OLED screen.

If the aeroplane symbol doesn't appear on the OLED screen when the Flight-ready tag is in position and the Power button is pressed, contact Dyson before travelling.

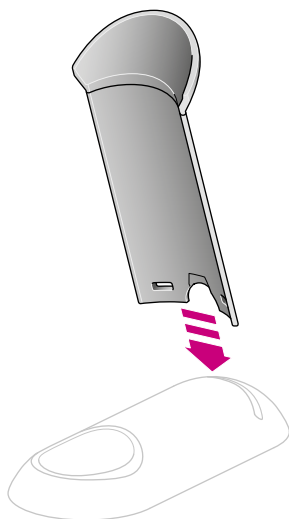
Charging when travelling

Just check if you need a travel adaptor. The Magnetic 360° charging cable is suitable for use with all mains electricity supplies.

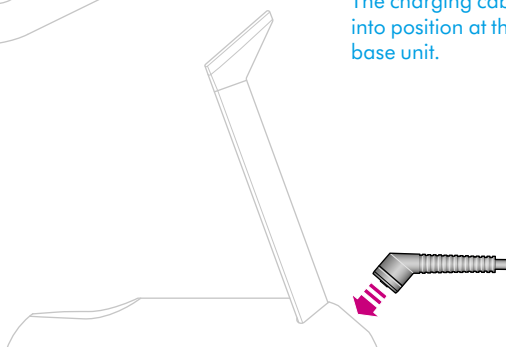
Reactivating your straightener

Remove, rotate and replace the Flight-ready tag to align with the house symbol.

Assembling the charging dock



The charging dock shown in two pieces with an arrow demonstrating that the vertical support slots into the rear of the base.



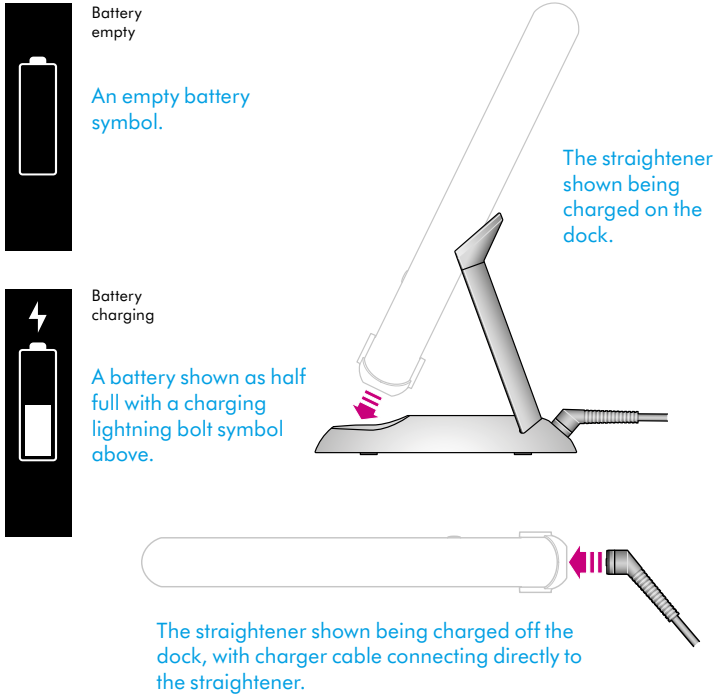
The charging cable is inserted into position at the rear of the base unit.

Your dock can be used as a charging dock or a stand to store your Dyson Corrale™ straightener.

Push the two parts of the charging dock together until they click securely in place.

Connect the Magnetic 360° charging cable to the base of the charging dock.

Charging your straightener



For the best performance, always fully charge your Dyson Corrale™ straightener between uses. When your straightener needs charging, the battery icon on the OLED screen will flash and a prompt will sound.

When the battery is empty, the battery icon will flash and a prompt will sound five seconds before your straightener turns off.

The battery charging LED will be amber when charging and turn green when fully charged.

Charge your Dyson Corrale™ straightener on the dock or directly with the Magnetic 360° charging cable.

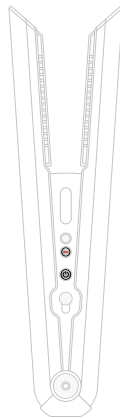
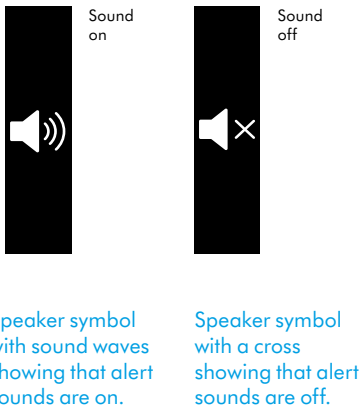
If your straightener is turned off, a prompt will sound when you connect to the Magnetic 360° charging cable.

Hybrid mode

You can use your straightener with the Magnetic 360° charging cable attached. This will extend the run time but you'll still need to fully charge between uses, as you will still be using battery power when styling.

We recommend that you fully charge your straightener before using in Hybrid mode.

Changing settings



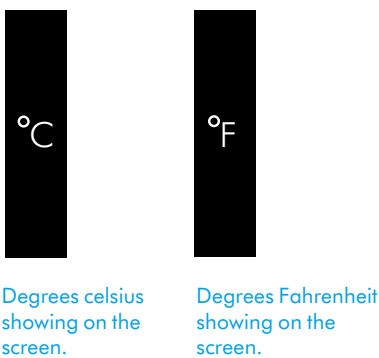
Turning sound alerts on and off
You can mute the prompt sounds during active use.

For your safety, you won't be able to mute the sounds for Sleep mode or alerts.

Press and hold the Power and Temperature (-) buttons to turn the prompt sounds off.

When the speaker icon is crossed through, the prompt sounds will be muted.

Repeat to turn the prompt sound back on.

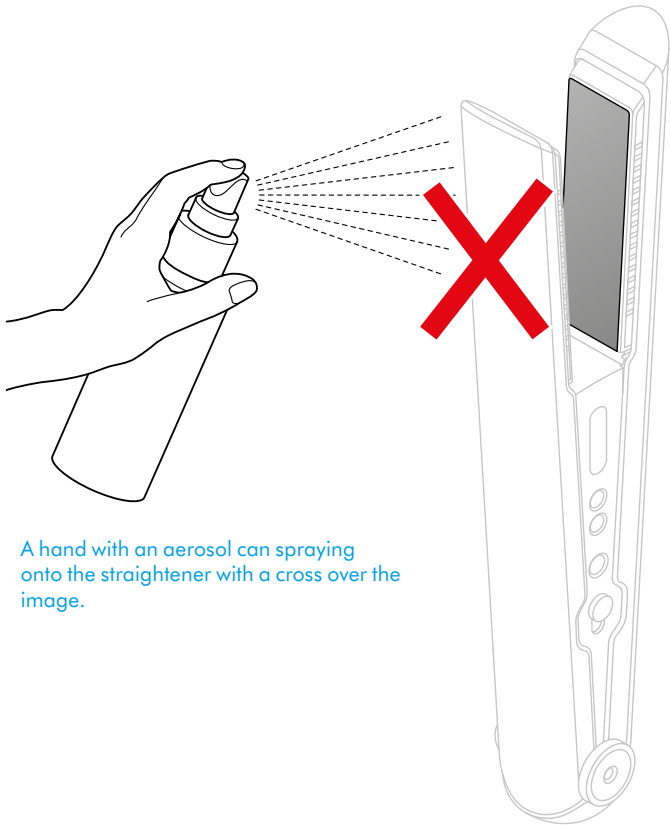


Changing temperature units
You can select your preferred temperature units (Celsius or Fahrenheit).

Press and hold the Power and Temperature (+) buttons to change between units.

When your preferred temperature unit shows on the OLED screen, release the buttons.

Looking after your straightener



A hand with an aerosol can spraying onto the straightener with a cross over the image.

Turn off your Dyson Corrale™ straightener and leave to cool before cleaning.

Clean the flexing plates with a damp, lint-free cloth. Rub gently to remove any stubborn hair product residue.

Don't use chemicals or abrasive products as this may damage the surface of the flexing plates.

Alert screens



On screen, a warning triangle with a thermometer symbol.

Too hot
Turn your straightener off and leave to cool down.



On screen, a warning triangle with a flashing power button and a finger about to press the button.

Reset
Turn your straightener off and then back on again to reset.



On screen, a warning triangle with charging cable with sparks.

Charger error
The charger isn't working as it should. Please contact the Dyson helpline.



On screen, a warning triangle with a speech bubble and telephone.

Call Dyson
Your straightener isn't working as it should. Please contact the Dyson helpline.



On screen, a tick with an aeroplane below.

If the aeroplane symbol doesn't appear on the OLED screen when the Flight-ready tag is in position and the Power button is pressed, contact Dyson before travelling.